



HHS emPOWER Program | WEB-BASED TRAINING FACT SHEET



The **HHS emPOWER Program Web-Based Training (#1083714)** is a **free, publicly accessible course** designed to advance awareness and integration of HHS emPOWER Program* tools into their emergency preparedness, mitigation, response, and recovery activities.

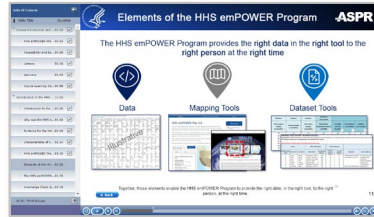
*The **HHS emPOWER Program**, a partnership between ASPR and the Centers for Medicare and Medicaid Services (CMS), provides dynamic data, mapping and artificial intelligence tools to help communities protect the health of the millions of Medicare beneficiaries who live independently and rely on electricity-dependent durable medical and assistive equipment and devices, and/or essential health care services.

Go to <https://www.train.org/main/course/1083714> to take the course today!

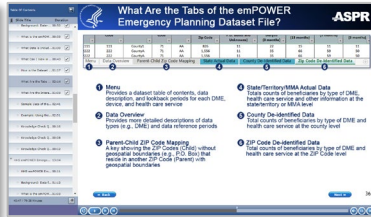
Course Features:

The course is divided into five modules, which introduces the HHS emPOWER Program, provides a detailed overview of each of the mapping and dataset tools, and gives examples of how public health authorities and their partners can use the program's tools across the emergency management cycle.

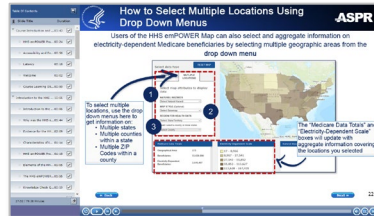
Program Information



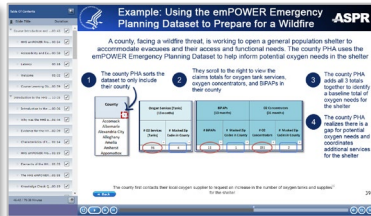
Program Tool Details



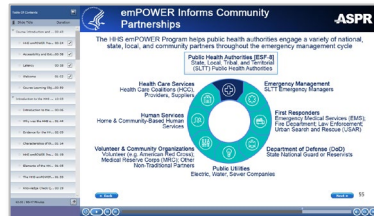
Step-by-Step Instructions



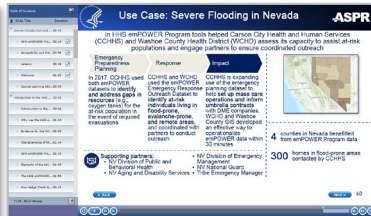
Practical Applications



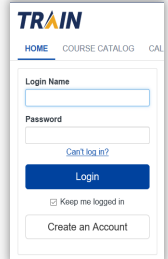
Partner Information



Real-World Case Studies



- 1 Create an account on [TRAIN.org](https://www.train.org), a national learning network, powered by the [Public Health Foundation](https://www.healthfoundation.org).

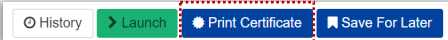


- 2 Search for course ID #1083714 in the TRAIN search bar or [select this link](#) to go directly to the course.



- 3 Launch the course and review all screens (with audio and/or closed captioning). The course will take 1.5 hours and can be paused and resumed at any time.

- 4 To earn CEUs**, three attempts will be given to achieve a score of at least 80% on the 10-question final exam. When finished, close out of the course and select the button on the course landing page that says "certificate."



****Note:** We are in the process of certifying this course. We will provide an update on the status of CEUs in the course description section on TRAIN.