



## HHS emPOWER Program

### *emPOWERing Communities, Saving Lives*

The HHS emPOWER Program, a partnership between ASPR and the Centers for Medicare and Medicaid Services (CMS), provides dynamic data, mapping and artificial intelligence (AI) tools, training and resources, which help communities protect the health of more than four million Medicare beneficiaries who live independently and rely on electricity-dependent durable medical and assistive equipment (DME) and devices, and/or essential health care services.

#### Individuals with Access and Functional Needs May Be At-Risk During an Emergency

Advances in technology and health care services have better enabled at-risk individuals (e.g., chronically ill and older adults) to live independently in their personal homes. To do so, millions of these individuals rely on life-maintaining DME and devices that require electricity to operate (e.g., ventilators), as well as certain health care services, such as in-facility ESRD dialysis, home oxygen, and home health care services.

Local incidents to large scale natural disasters, infrastructure failures, and infectious disease outbreaks can rapidly thrust these at-risk individuals into life-threatening situations, leading many to overwhelm emergency medical services, hospitals, or shelters when seeking access to care or power sources. Others may shelter in place due to a lack of resources, transportation, or assistance, putting their lives in danger.

#### What the HHS emPOWER Program Provides Communities

The HHS emPOWER Program helps communities protect the health of at-risk populations living independently, better ensure continuity of care and services, and reduce system stress in the event of a natural or man-made incident, emergency, or disaster. The HHS emPOWER Program uses limited Medicare administrative claims data to provide the right data, in the right tool, to the right person, at the right time which includes a set of dynamic data, mapping and AI tools, training, and resources:

**Map, REST Service, and emPOWER AI**    **Dataset Tools**    **Program Training and Resources**



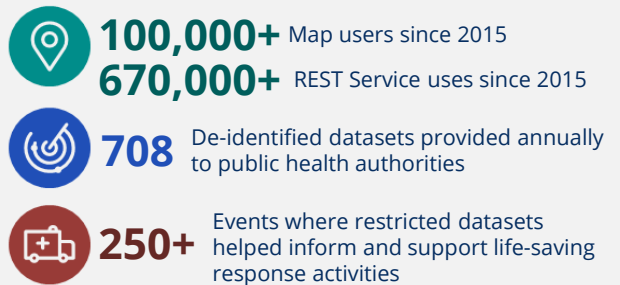
The HHS emPOWER Program's public map, [HHS emPOWER Map](#), [HHS emPOWER Representational State Transfer \(REST\) Service](#), and voice-activated AI tool, [HHS emPOWER AI](#), provide de-identified data on at-risk populations. The HHS emPOWER Program also provides public health

authorities (PHAs) in states, territories, and certain major metropolitan areas (MMAs) with more granular data through the restricted, [HHS emPOWER Emergency Planning Dataset](#) which advance emergency preparedness activities and readiness prior to a disaster. In the event of a disaster, a PHA who meets specific requirements may request an official disclosure of a secure, restricted [HHS emPOWER Emergency Response Outreach Dataset](#) with more detailed information to support life-saving response outreach and recovery public health activities.

#### How the HHS emPOWER Program is Helping

PHAs, community partners, health care coalitions (HCCs), and others nationwide use emPOWER data and tools to strengthen emergency preparedness, mitigation, response, and recovery activities. For example, public health officials and emergency managers may use emPOWER tools to gain population-level situational awareness, anticipate and plan for patient surges, or inform sheltering and evacuation assistance needs. In the event of a disaster, PHAs can request more detailed information to support public health activities, including targeted outreach and wellness checks to those who may be adversely impacted.

#### HHS emPOWER Program: By the Numbers



emPOWER tools are versatile and have been used across a range of critical events that include, but are not limited to, wildfires, hurricanes, extreme heat, winter storms, power outages, critical infrastructure failures, and infectious disease outbreaks. Additional information on the program's impact and success stories are on the next page and available via the [HHS emPOWER Program Platform emPOWER in Action](#) page.

Updated: April 2023



Administration for Strategic Preparedness & Response

The HHS emPOWER Program's Impact

Since 2013, this program has emPOWERed communities in all 50 states, 5 territories, major metropolitan areas (Los Angeles County, New York City, and Chicago), and the District of Columbia to strengthen emergency preparedness and take action to protect at-risk populations throughout incidents, emergencies, and disasters. As of December 2022, over 100,000 users had accessed the HHS emPOWER Map.



Several PHAs and their partners have used one or more of the HHS emPOWER Program tools for emergency preparedness and response activities.

**CALIFORNIA: Identified Resource Gaps**

Los Angeles County, CA, used emPOWER data and tools innovatively to inform multi-agency training and exercises and to protect the health of over 100,000 at-risk community members through wildfires, power outages, flooding and mudslides, and water quality emergencies.

**PENNSYLVANIA: Conducted Targeted Outreach**

Philadelphia County, PA, used the Emergency Response Outreach dataset to conduct COVID-19 response outreach to 13,000 at-risk individuals and engaged home health agencies to provide health, safety, and service information.

**OREGON: Evacuation Route Planning**

During severe wildfires in Brookings, OR, a community with a large population of older adults, Oregon PHAs used emPOWER the Emergency Response Outreach dataset to identify at-risk individuals and plan evacuation routes.

**FLORIDA: Activated Emergency Communication Networks**

Florida Department of Health used the Emergency Response Outreach dataset to conduct life-saving outreach to over 40,000 at-risk residents during Hurricane Matthew and identified 169 individuals who had a health need.

**Evolving emPOWER to Meet Stakeholder Needs**

The HHS emPOWER Program hosts the [HHS emPOWER Program Platform](#), a publicly-accessible online platform, providing educational and training materials and access to emPOWER tools and resources to help partners rapidly adopt, understand, and use emPOWER data and tools to advance readiness in their communities.

emPOWER expands the reach and accessibility of its tools through targeted partner engagement and educational opportunities. The program also regularly adds new, innovative technology, tools, and capabilities that can help partners better protect the health of individuals with access and functional needs in their communities.

**Building Capacity and Expanding emPOWER**

Through the [“emPOWERing State Medicaid and CHIP Data Pilot,”](#) emPOWER provides resources, training, and

technical assistance to participating state and territory PHAs to help them develop complementary emPOWER datasets using their Medicaid and Children’s Health Insurance Program (CHIP) data. emPOWER has helped multiple states use their state owned and operated Medicaid and CHIP data to help protect health and save the lives of at-risk adults and children with access and functional needs.

**emPOWER COVID-19 At-Risk Data and Tools**

emPOWER temporarily expanded to include a new COVID-19 At-Risk population, launching a suite of dataset, mapping, and dashboard tools, as well as trainings, and resources to support state, territorial, and local public health partners to protect health and advance health equity, support vaccine and therapeutic planning, and help mitigate health care system surge.

Updated: April 2023